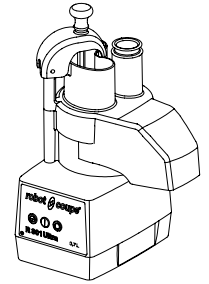


**ATTENTION :**

**WARNING :**

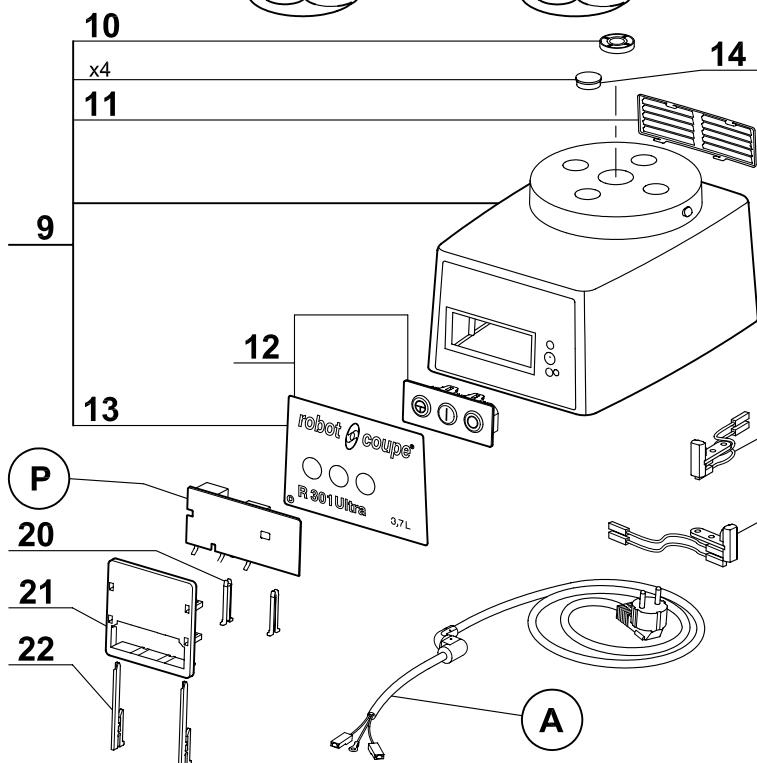
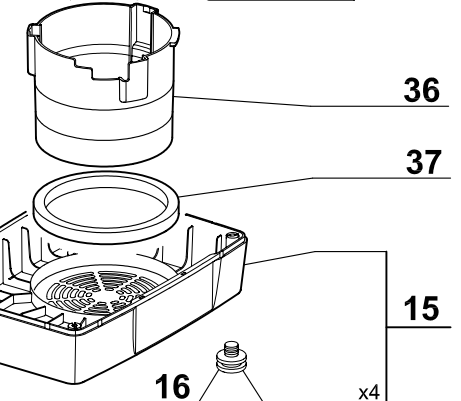
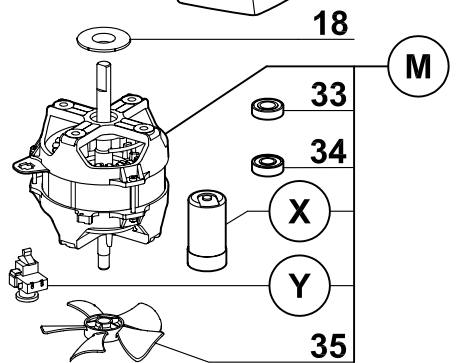
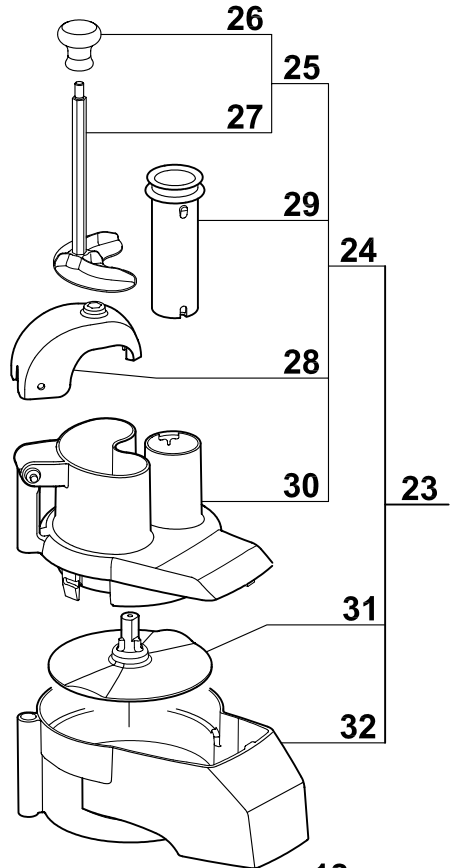
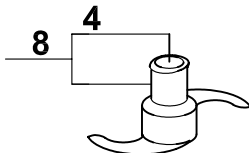
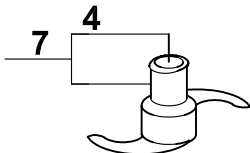
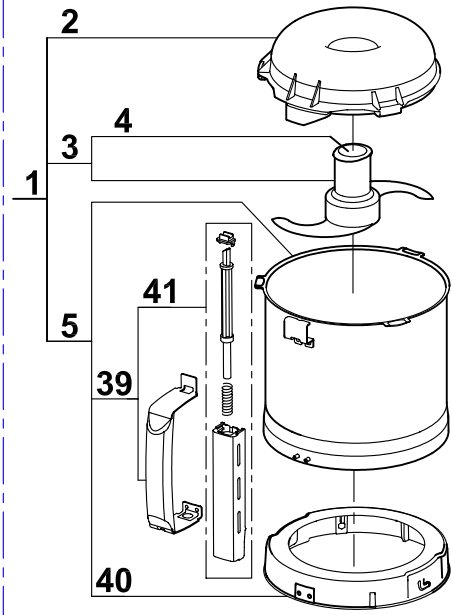
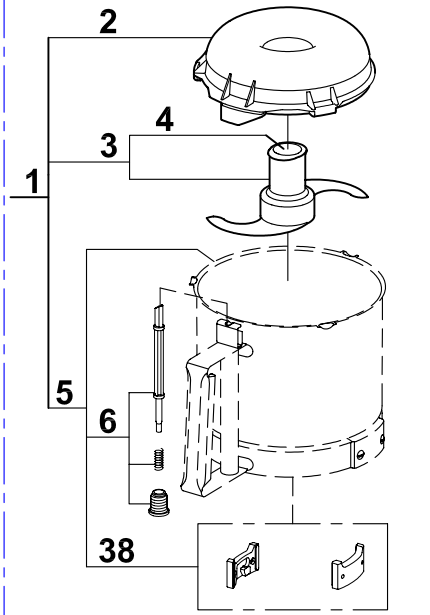
Choisir les pièces détachées en fonction du type de la cuve. La cuve complète ou le cutter complet étant parfaitement interchangeable, dans tous les cas choisir respectivement les repères 5 ou 1.

Choose the spare parts in accordance with the bowl type. As the complete bowl or the cutter attachment are fully interchangeable, for all types choose respectively item 5 or 1.



Type 1

Type 2



<i>Index</i>	<i>Pièce / Part</i>	<i>Désignation</i>	<i>Description</i>
1	<b>27 278</b>	CUTTER COMPLET	CUTTER ATTACHEMENT
2	<b>117 395</b>	COUVERCLE CUTTER	CUTTER LID
3	<b>27 286</b>	COUPEAU LISSE	STRAIGHT BLADE
4	<b>104 147</b>	CAPUCHON COUPEAU	BLADE CAP
5	<b>39 759</b>	ENS. CUVE CUTTER	CUTTER BOWL ASSEMBLY
6	<b>39 228</b>	ENS. TIGE SECURITE	SAFETY ROD ASSEMBLY
7	<b>27 287</b>	COUPEAU DENTE	FINE SERRATED BLADE
8	<b>27 288</b>	COUPEAU CRANTE	SERRATED BLADE
9	<b>39 317</b>	ENS. SUPPORT MOTEUR	MOTOR SUPPORT ASSEMBLY
10	<b>501 010</b>	BAGUE ETANCHEITE	SHAFT SEAL
11	<b>104 122</b>	GRILLE VENTILATION	VENTILATION GRID
12	<b>39 293</b>	ENS. TABLEAU COMMANDE	CONTROL PANEL ASSEMBLY
13	<b>407 834</b>	PLAQUE FRONTALE	FRONT PLATE
14	<b>104 121</b>	CAPSULE CACHE VIS	BOLT COVER
15	<b>39 288</b>	ENS. SOCLE	BASE ASSEMBLY
16	<b>101 082</b>	PIED	FOOT
17	<b>29 356</b>	INTERRUPTEUR SECURITE COUPE-LEGUMES	VEGETABLE SLICER SAFETY SWITCH
18	<b>104 078</b>	CENTREUR MOTEUR	MOTOR CENTRING
19	<b>29 451</b>	INTERRUPTEUR SECURITE CUTTER	CUTTER SAFETY SWITCH
20	<b>102 913</b>	CLAVETTE PLASTRON	PANEL KEY
21	<b>102 911</b>	SUPPORT PLATINE	CONTROL BOARD SUPPORT
22	<b>117 703</b>	CLAVETTE FIXE PLATINE	CONTROL BOARD KEY
23	<b>27 295</b>	ENS. COUPE-LEGUMES	VEGETABLE SLICER ASSEMBLY
24	<b>39 287</b>	ENS. COUVERCLE COUPE-LEGUMES	VEGETABLE SLICER LID ASSEMBLY
25	<b>29 880</b>	ENS. POUSSOIR LEGUMES	VEGETABLE PUSHER ASSEMBLY
26	<b>102 021</b>	POIGNEE	HANDLE KNOB
27	<b>103 703</b>	POUSSOIR LEGUMES	VEGETABLE PUSHER
28	<b>104 922</b>	GUIDE POUSSOIR	PUSHER GUIDE
29	<b>118 324</b>	POUSSOIR CAROTTES	ROUND PUSHER
30	<b>104 919</b>	COUVERCLE COUPE-LEGUMES	VEGETABLE SLICER LID
31	<b>104 921</b>	DISQUE EVACUATEUR	SLING PLATE
32	<b>104 918</b>	CUVE COUPE-LEGUMES	VEGETABLE SLICER BOWL
33	<b>504 229</b>	ROULEMENT MOTEUR SUPERIEUR 6002 2RS	UPPER BALL-BEARING 6002 2RS
34	<b>600 457</b>	ROULEMENT MOTEUR INFERIEUR 6201 2RS	LOWER BALL-BEARING 6201 2RS
35	<b>117 610</b>	VENTILATEUR MOTEUR	MOTOR FAN
36	<b>104 110</b>	CONDUIT VENTILATION	VENTILATION BAFFLE
37	<b>101 099</b>	TAMPON AMORTISSEUR	ABSORBER
38	<b>29 081</b>	ENS. PLAQUETTE	LOCKING PLATE ASSEMBLY
39	<b>39 752</b>	ENS. POIGNEE CUVE	BOWL HANDLE ASSEMBLY
40	<b>39 797</b>	ENS. RONDELLE D'ACCROCHAGE	LOCKING WASHER ASSEMBLY
41	<b>39 751</b>	ENS. TIGE SECURITE	SAFETY ROD ASSEMBLY

Index	Désignation	Description
<b>A</b>	CABLE D'ALIMENTATION	POWER CORD
<b>M</b>	MOTEUR	MOTOR
<b>P</b>	CARTE DE COMMANDE	CONTROL BOARD
<b>X</b>	CONDENSATEUR DE DEMARRAGE	STARTING CAPACITOR
<b>Y</b>	RELAIS DEMARRAGE MOTEUR	MOTOR STARTING RELAY

Machine	Voltage	A	M	P	X	Y
22 377 UK	240/50/1	504 275	3 074	103 693	600 018	500 289
2 447 UK						
2 540 Pack 4D UK		504 278				
22 378 Aust						
2 542 Pack 4D Aust						
22 379 DK	230/50/1	504 276				
2 550 DK						
22 403 CH		504 292				
2 418 CH						
2 417 Pack 4D CH						
22 375		504 274				
2 547						
2 546 Pack 4D FR						
2 545 Pack 3D ALL						
2 544 Pack 4D SWE						
2 548 Pack 5D OST						
22 380	220/60/1		3 075		603 669	
2 543						
22 381	120/60/1	504 277	3 076	103 692		500 296
2 541						